

N. ELM STREET & E. NORTH STREET INTERSECTION CLOSURE FOR 3/27/2023

Blue Cloud Imaging, Inc

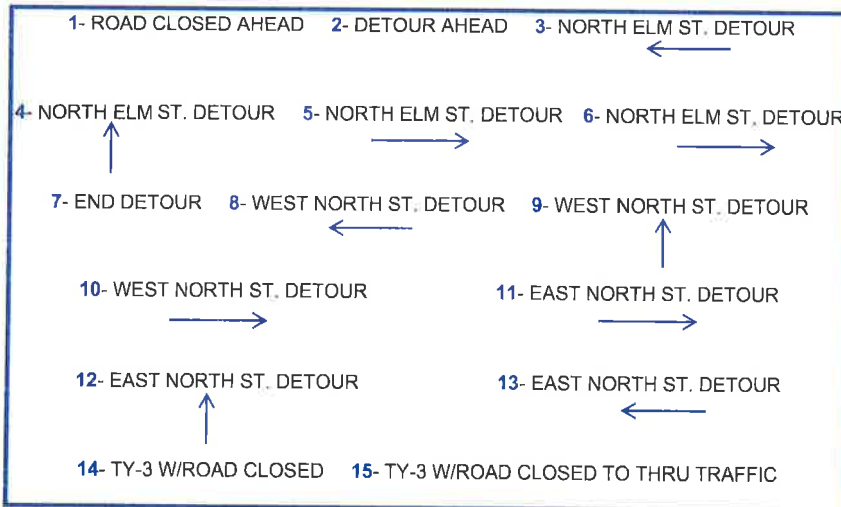
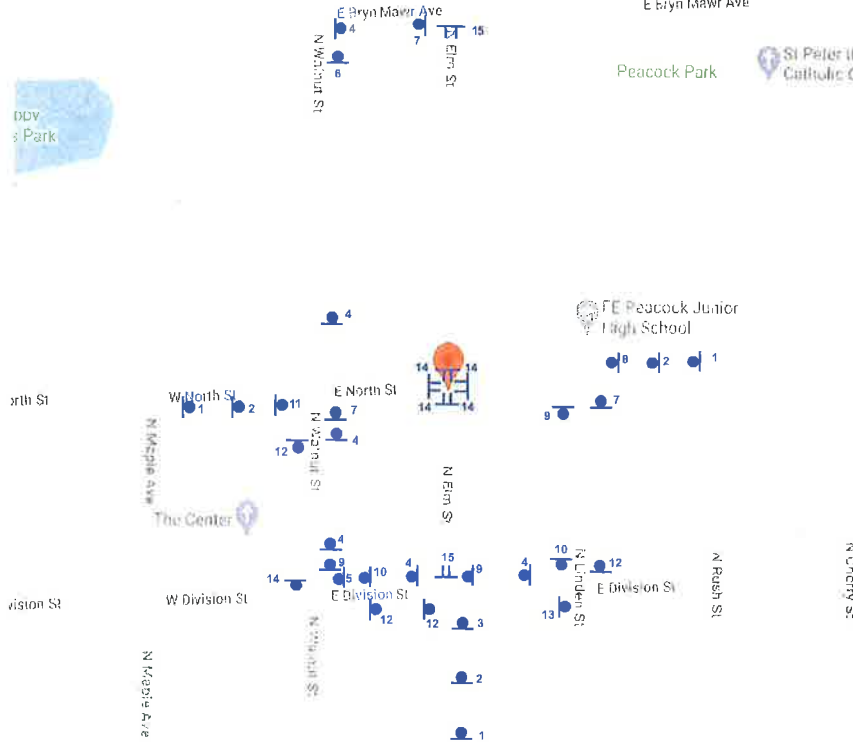


E Bryn Mawr Ave

Peacock Park

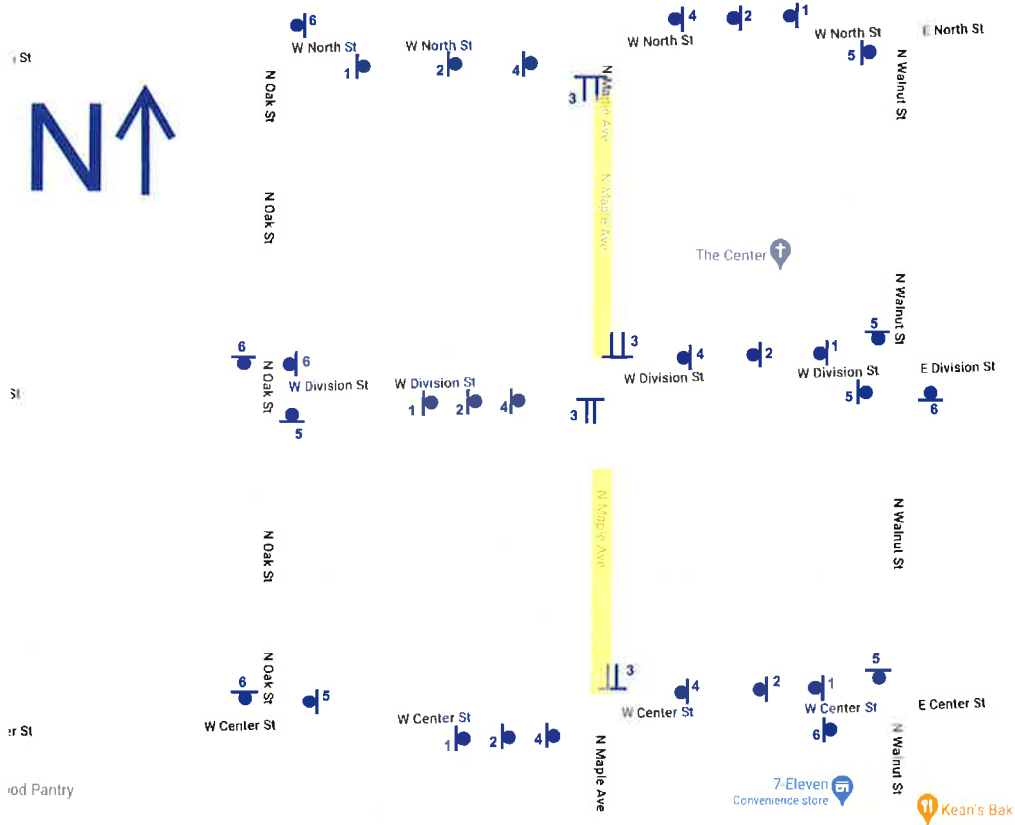
St Peter the Catholic Cl

DDV
s Park



ROADWAY & INFRASTRUCTURE IMPROVEMENTS - PHASE 2 VILLAGE OF ITASCA, ILLINOIS

N. MAPLE STREET CONSTRUCTION SUGGESTED ALTERNATE ROUTES

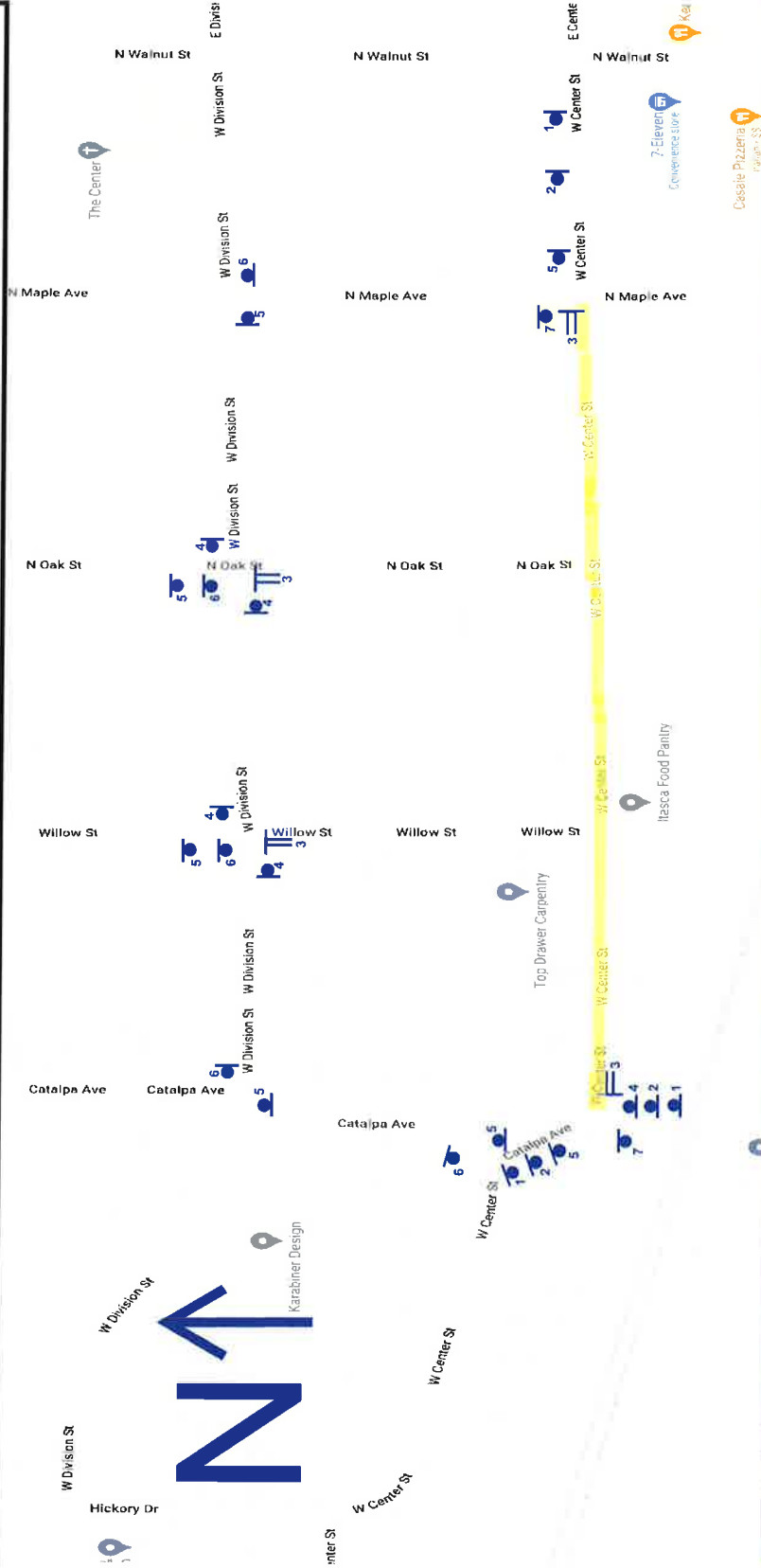


1- MEN WORKING	2- ROAD CONSTRUCTION AHEAD	
3- TY-3 W/ROAD CLOSED TO THRU TRAFFIC		
4- DETOUR ↑	5- DETOUR →	6- DETOUR ←

THE APPROXIMATE WORK LIMITS ON MAPLE AVENUE ARE SHADED IN YELLOW. WHILE THE CONTRACTOR IS INSTALLING UNDERGROUND UTILITIES, VEHICULAR ACCESS TO MAPLE AVENUE WILL BE ALLOWED, BUT FOR CONVENIENCE, ALTERNATE ROUTES TO GET AROUND MAPLE AVENUE ARE SHOWN ABOVE.

ROADWAY & INFRASTRUCTURE IMPROVEMENTS - PHASE 2
VILLAGE OF ITASCA, ILLINOIS

W. CENTER STREET CONSTRUCTION SUGGESTED ALTERNATE ROUTES



1- MEN WORKING **2- ROAD CONSTRUCTION AHEAD**

3- TY-3 W/ROAD CLOSED TO THRU TRAFFIC

4- DETOUR ↑ **5- DETOUR** → **6- DETOUR** ← **7- END DETOUR** →

THE APPROXIMATE WORK LIMITS ON CENTER STREET ARE SHADED IN YELLOW. WHILE THE CONTRACTOR IS INSTALLING UNDERGROUND UTILITIES, VEHICULAR ACCESS TO CENTER STREET WILL BE ALLOWED, BUT FOR CONVENIENCE, ALTERNATE ROUTES TO GET AROUND CENTER STREET ARE SHOWN ABOVE.

ROADWAY & INFRASTRUCTURE IMPROVEMENTS - PHASE 2

VILLAGE OF ITASCA, ILLINOIS